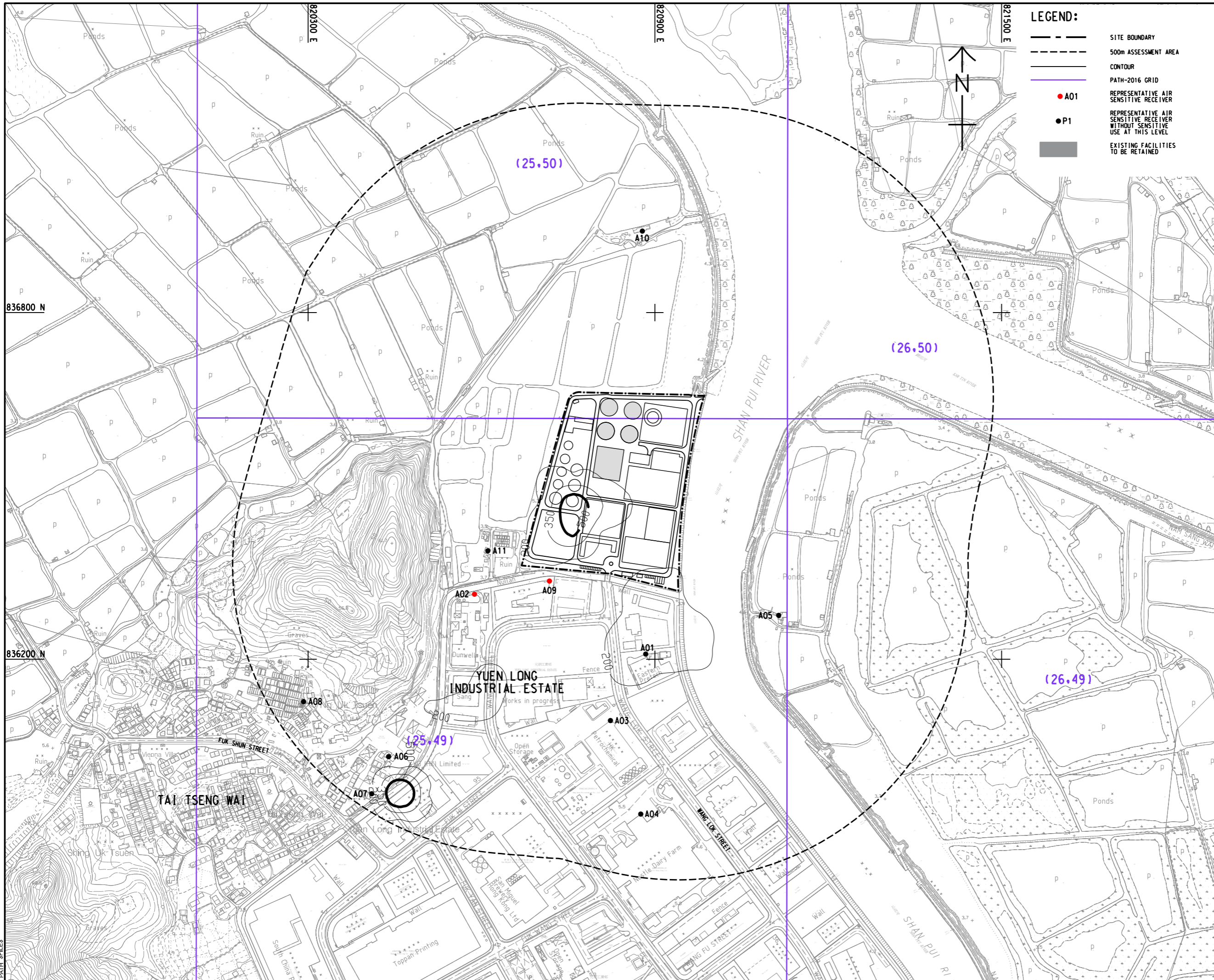


ISO A1 594mm x 841mm
Approved:
Checked:
Designer:
Project Management Initials:
836800 N
836200 N
836800 N
820300 E
820900 E
821500 E
836800 N
836200 N
SDATES
PATH SPLICES



LEGEND:

- SITE BOUNDARY
- - - 500m ASSESSMENT AREA
- CONTOUR
- PATH-2016 GRID
- A01 REPRESENTATIVE AIR SENSITIVE RECEIVER
- P1 REPRESENTATIVE AIR SENSITIVE RECEIVER WITHOUT SENSITIVE USE AT THIS LEVEL
- EXISTING FACILITIES TO BE RETAINED

AECOM

PROJECT
YUEN LONG EFFLUENT POLISHING PLANT - INVESTIGATION, DESIGN AND CONSTRUCTION

CLIENT
渠務署
Drainage Services Department

CONSULTANT
AECOM Asia Company Ltd.
www.aecom.com

SUB-CONSULTANTS
分判工程師有限公司

ISSUE/REVISION

I/R	DATE	DESCRIPTION	CHK.

STATUS

SCALE
A1 1 : 3000

DIMENSION UNIT
METRES

KEY PLAN

PROJECT NO.
60505476

CONTRACT NO.
CE 3/2015 (DS)

SHEET TITLE
CONTOURS OF CUMULATIVE 4TH HIGHEST 10-MIN SO2 CONCENTRATION (µg/m³) AT 15m ABOVE GROUND (YEAR 2026 - 2030)

SHEET NUMBER
60505476/EIA/FIGURE 3.36c

This drawing has been prepared for the use of AECOM's client. It may not be used, modified, reproduced or relied upon by third parties, except as required by law. AECOM accepts no responsibility, and disclaims any liability whatsoever, for any party that uses or relies on this drawing without AECOM's express written consent. All measurements must be obtained from the stated dimensions.